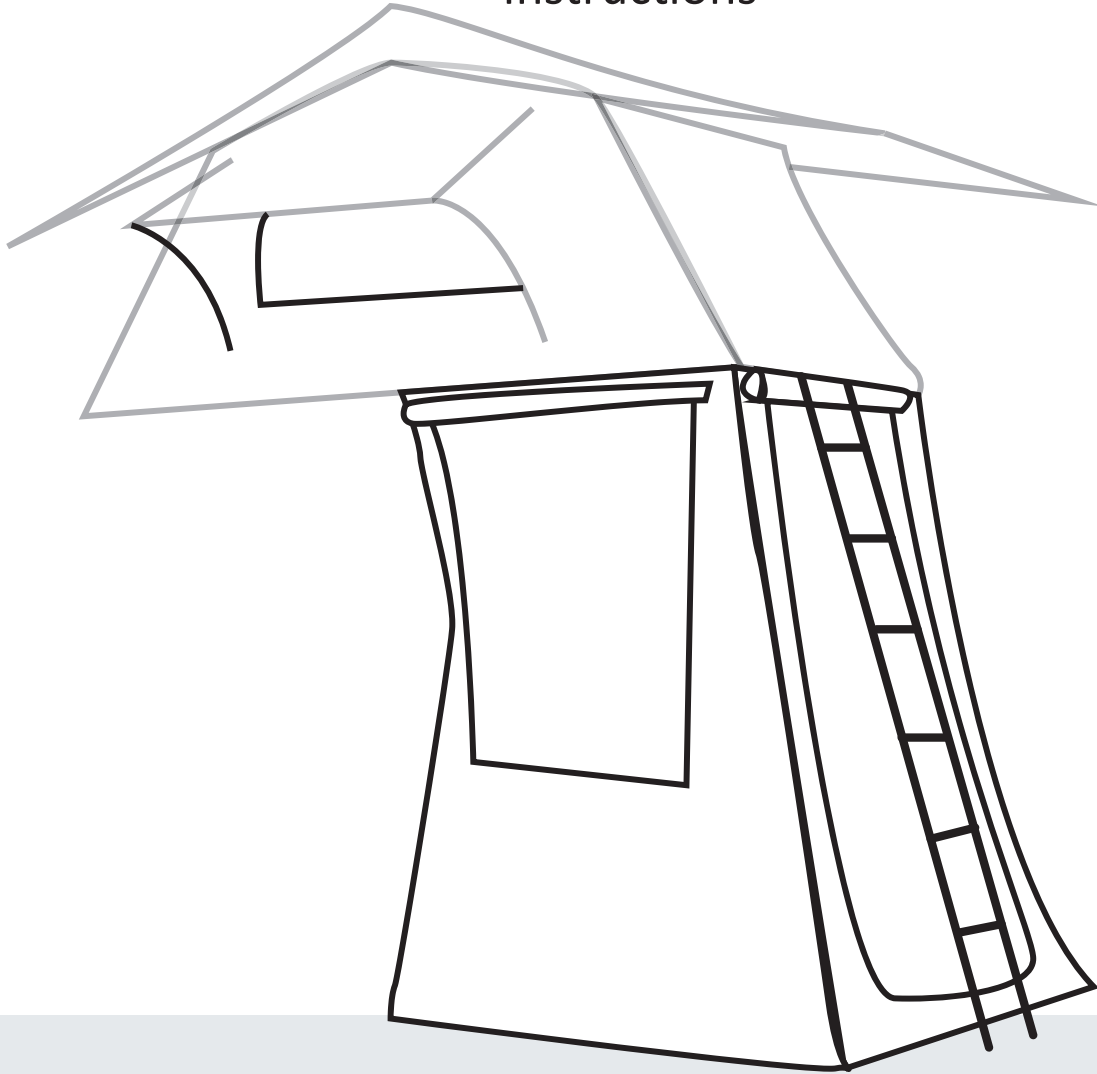




OVS

OVERLAND VEHICLE SYSTEMS

LD TMBK Annex Room Instructions



**CAREFULLY READ INSTRUCTIONS
PRIOR TO THE FIRST USE OF THE
LD TMBK ANNEX INSTRUCTIONS**

LD TMBK ANNEX ROOM

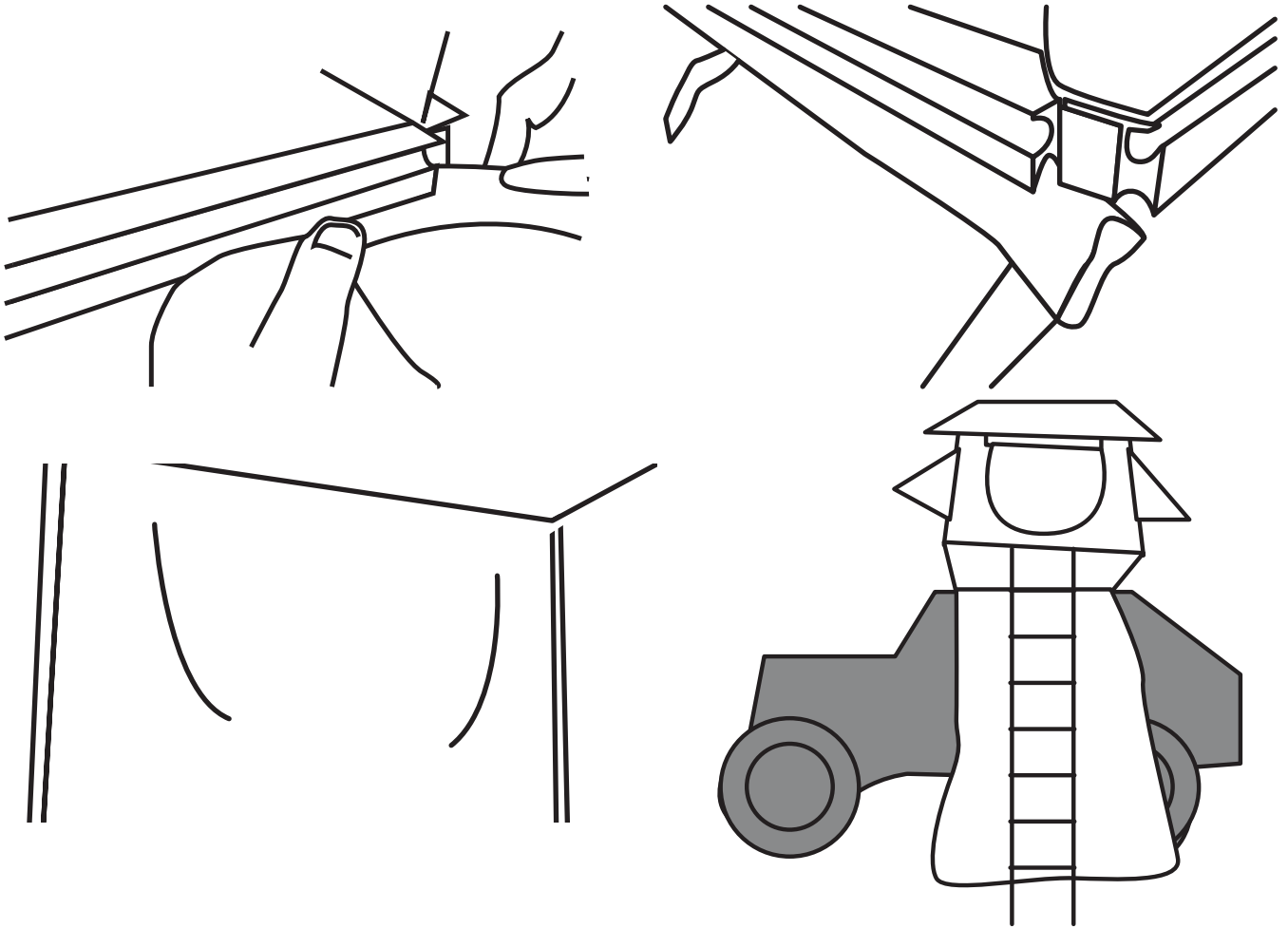
SET-UP & CARE INSTRUCTIONS

INSTALLATION

1

Remove Annex from the storage bag.

Before Opening the LD TMBK Roof Top Tent, slide the one end of the C-Channel Tubing into the C-Channel Railing at the bottom of your tent.

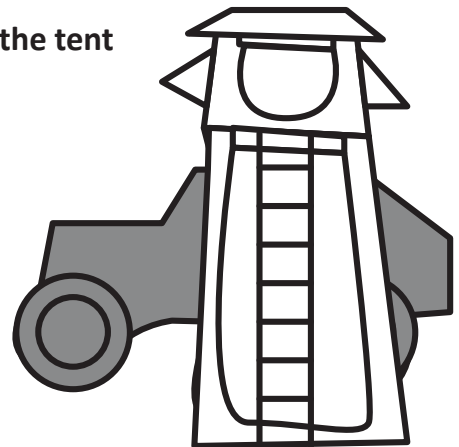
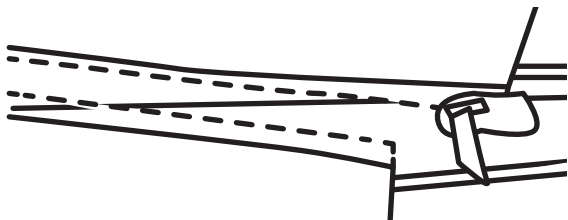


2

Connect the zipper on the annex to the zipper on the base of the tent

Slide the zipper along the remaining 3 edges

NOTE: The Ladder goes on the outside of the annex.

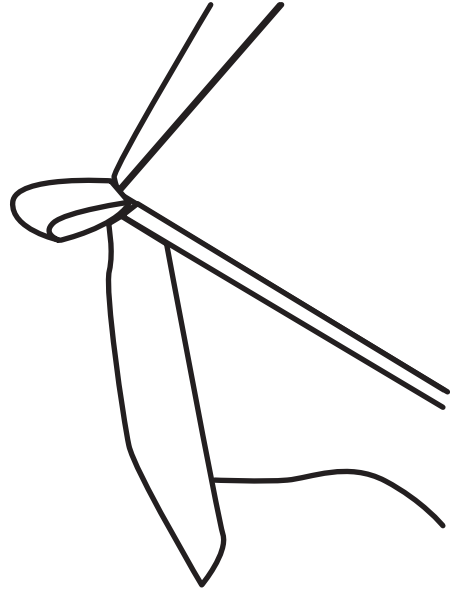


LD TMBK ANNEX ROOM

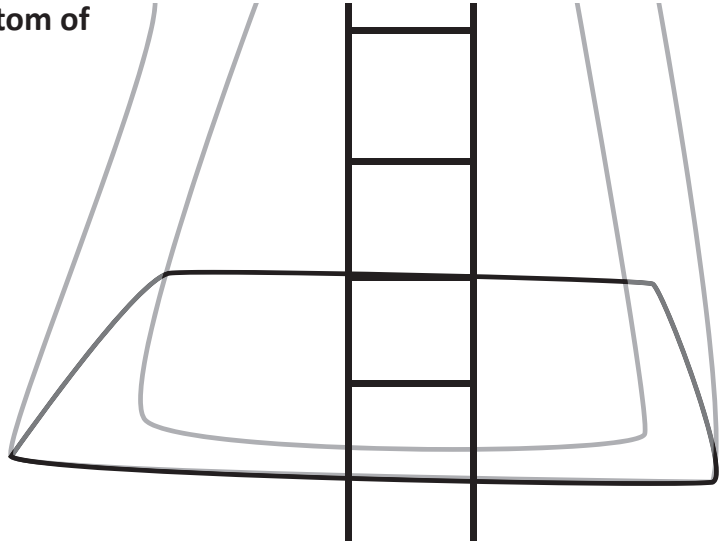
SET-UP & CARE INSTRUCTIONS

3

Once Annex is completely zipped onto the tent base, expand the base outward and stake down using the provided ground stakes.



Then attach the PVC Flooring to the bottom of the annex room using the SBS Zippers



CLEANING

Clean with Cold Water and Soap
with a Soft Sponge

WARNINGS

- **DO NOT** use the tent annex room in high winds, severe storms, heavy snow, or extreme weather conditions
- **ALWAYS** secure the annex room with all required poles, stakes, straps, and attachment points before use.
- **IMPROPER** installation may result in collapse, damage, injury, or product failure.
- **NEVER** leave the annex room unattended in windy or unstable weather conditions.
- **DISCONTINUE** use immediately if the annex room fabric, zippers, seams, or structural components show signs of tearing, fraying, bending, or damage.
- **DO NOT** exceed manufacturer-recommended wind, load, or weather limitations.
- **ENSURE** adequate ventilation when the annex room is fully enclosed to prevent heat buildup, condensation, or reduced airflow.
- **KEEP CLEAR** of poles, tension straps, zippers, and attachment points during setup and takedown.
- **DO NOT** allow children to play in or around the annex room or use it unsupervised.
- **USE CAUTION** when entering or exiting the annex room to avoid tripping, slipping, or entanglement.
- **DO NOT** modify the annex room, poles, fabric, or attachment hardware in any way.
- **CHECK** all fasteners, stakes, zippers, and attachment points before each use.
- **REMOVE** the annex room immediately if wind conditions increase unexpectedly or ground anchoring becomes unstable
- **AVOID** open flames, heaters, stoves, or cooking devices inside or near the annex room.
- **DO NOT** use the annex room as a load-bearing structure or for hanging heavy objects.
- **FAILURE** to follow these warnings may result in injury, property damage, or voided warranty.



DO YOU NEED OUR HELP?



CUSTOMER SUPPORT 833-226-4863



SALES@OVERLANDVEHICLESYSTEMS.COM

WANT TO SHOW US YOUR RIG?
CHECK OUT OUR SOCIAL!

@overlandvehiclesystems

